

## Koncentrik-V2 Ferrule

- Measure ceramic and metal PC-type ferrules
- Automatic measurement + re-positioning of ferrule at tuned position
- Ferrule end-face visual inspection at x400 magnification
- Accurate and repeatable measurements
- User adjustable quality level for high-speed measurements
- Easy calibration Koncentrik Software

- Measurement data exported in standard CSV format
- Statistics on measurements available

- Ferrule sorting
- Measures eccentricity of the ferrule bore with respect to the ferrule outer envelope

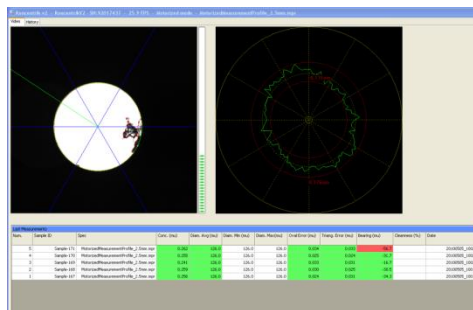


Call now to place  
your order:  
1-866-899-7953



The KONCENTRIK-V2 is a modular measurement system. Several mechanical modules adapt on it so that either fiber or ferrule eccentricity measurements can be performed.

With this module, KONCENTRIK-V2 measures the concentricity of the ferrule bore with respect to the ferrule outer envelope with less than  $0.15\mu\text{m}$  uncertainty. Other measured values are the angular position of the bore with respect to the connector key (tuning applications), the bore diameter and non-circularity errors of both the ferrule outer envelope and the ferrule bore.



Parameter	Repeatability / Reproducibility	Range
Eccentricity measurement	±0.05µm	0 to 100µm
Indexing measurement	±5° if eccentricity > 0.2µm	0 to 360°
Measurement Speed		3 sec+ (user variable)
Magnification		X 400
Ferrule outside Ø		1 to 3.17 mm
Ferrule bore Ø		5 to 500µm
Power requirements		12V external supply
Link to PC		USB2.0, no card required
Temperature		10 to 35°C
Humidity		5 to 95%, non-condensing

- *DAISI works on WINDOWS-2000 Professional (Service Pack 3) as well as XP (Service Pack 1) and VISTA operating systems.*
- *The processor should be an INTEL 1.4 GHz or more and at least 256 Mb of RAM are required (512 Mb recommended).*
- *A strong multimedia-oriented video display card should be used with at least 64Mb of on-board video memory.*

Tel: 1-866-899-7953 • Fax: 678-623-0652 • Sales@ConnectedFibers.com • www.ConnectedFibers.com

Connected Fibers, LLC MAKES NO EXPRESS OR IMPLIED WARRANTIES OF MERCHANTABILITY, FITNESS OR OTHERWISE, with respect to its products. In addition, while the information herein is believed to be reliable, no warranty is expressed or implied regarding the accuracy of the data or the results to be obtained from the use thereof. All recommendations or suggestion for use are made without guarantee - inasmuch as conditions of use are beyond our control. The properties given are typical values, and are not intended for use in preparing specifications. Users should make their own test to determine the suitability of this product for their own purposes. Prices subject to change without notice. All statements, technical information related to the Seller's products are based on the information believed to be reliable, but the accuracy or completeness thereof is not guaranteed.

# DATA SHEET

## Koncentrik-V2 Ferrule

### Features

- Measure ceramic and metal PC-type ferrules
- Automatic measurement + re-positioning of ferrule at tuned position
- Ferrule end-face visual inspection at x400 magnification
- Accurate and repeatable measurements
- User adjustable quality level for high-speed measurements
- Easy calibration Koncentrik Software

### Benefits

- Measurement data exported in standard CSV format
- Statistics on measurements available

### Applications

- Ferrule sorting
- Measures eccentricity of the ferrule bore with respect to the ferrule outer envelope

### Ordering Information

Part Number	Description
	Basic Hardware System (without any measurement module)
DPLC-01-V2	Parts included: KONCENTRIK Basic Hardware System version 2+ BLINK-CONCENTRICITY Software CD ROM, USB cable, 12V Power Supply
DPLC-01-V2-AF	Autofocus module



Call now to place  
your order:  
1-866-899-7953



Tel: 1-866-899-7953 • Fax: 678-623-0652 • Sales@ConnectedFibers.com • www.ConnectedFibers.com

Connected Fibers, LLC MAKES NO EXPRESS OR IMPLIED WARRANTIES OF MERCHANTABILITY, FITNESS OR OTHERWISE, with respect to its products. In addition, while the information herein is believed to be reliable, no warranty is expressed or implied regarding the accuracy of the data or the results to be obtained from the use thereof. All recommendations or suggestion for use are made without guarantee - inasmuch as conditions of use are beyond our control. The properties given are typical values, and are not intended for use in preparing specifications. Users should make their own test to determine the suitability of this product for their own purposes. Prices subject to change without notice. All statements, technical information related to the Seller's products are based on the information believed to be reliable, but the accuracy or completeness thereof is not guaranteed.