

DATA SHEET

PM ALIGNER

Features

- Automatic measurement of the orientation of PM fibers' strain elements
- Specific back lighting is not required
- Precise, fast, robust measurements
- Measurement very resilient to lighting and contrast variations
- Real-time measurement (25 measurements per sec)
- Easy user calibration
- Autofocus module option available

The New PM ALIGNER will enable you to accurately mechanically align the stress elements of a PANDA Polarization-Maintaining fiber with the key of the connector.

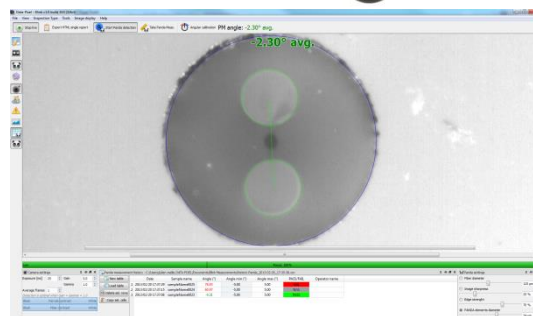
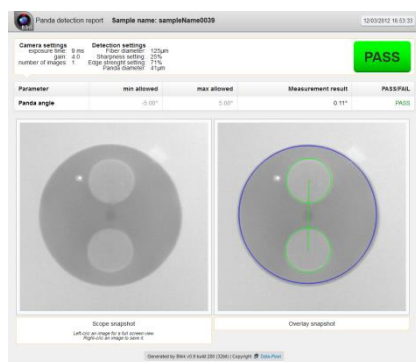
It features an exceptional long working distance offering the operator a spacious workspace between the optical measuring head and the connector endface.

The combination of the Data-Pixel Blink-PM software and PM ALIGNER will measure the angular alignment of the stress elements in real-time allowing the operator to rapidly position them to the required angular position.



Benefits

- HTML reports for reduced file size
- Export to database
- Software automation for system integration
- Windows XP & 7 supported



Applications

- Fiber Optic Production
- Measuring PANDA Fibers

Part Number

DPLC-PMALIGNER

Description/Standard Package

1 hardware system with 1 universal PM PC mount with 1.25mm or 2.5mm holder, 1 APC key adapter and fiber stub for mechanical calibration (SC or LC), BLINK-LIGHT software module for image viewing and saving

Software Platform



BLINK: The new software platform for all Data-Pixel products. BLINK is now highly customizable, modern software with plugin architecture. It supports all Data-Pixel products, each product having a dedicated plugin (Automated Visual Inspection, Interferometry, Concentricity, Far-Field, PM Alignment, and custom applications).

DPLC-BLINK-PM

BLINK-PM software for PM-ALIGNER: tracks fiber location and the Panda stress elements in real time.

Requires a dual core PC with an Nvidia GPU card. To achieve real-time detection, we recommend a computer with a quad-core processor and a recent "gamer" graphic card.

Call now to place
your order:
1-866-899-7953



Tel: 1-866-899-7953 • Fax: 678-623-0652 • Sales@ConnectedFibers.com • www.ConnectedFibers.com

Connected Fibers, LLC MAKES NO EXPRESS OR IMPLIED WARRANTIES OF MERCHANTABILITY, FITNESS OR OTHERWISE, with respect to its products. In addition, while the information herein is believed to be reliable, no warranty is expressed or implied regarding the accuracy of the data or the results to be obtained from the use thereof. All recommendations or suggestion for use are made without guarantee - inasmuch as conditions of use are beyond our control. The properties given are typical values, and are not intended for use in preparing specifications. Users should make their own test to determine the suitability of this product for their own purposes. Prices subject to change without notice. All statements, technical information related to the Seller's products are based on the information believed to be reliable, but the accuracy or completeness thereof is not guaranteed.